

Aqualman Fishing Charter

4 Hours — \$447.00 (Max 6 Guests)



CLOSED: MONDAY

- 9 AM Tours
 - Boat Tour — \$65 Adult | \$50 Child
 - Kayak & Paddleboard — \$71 per person

PIC Waterpark

Open Daily: 9AM–6PM

Adult (12+): \$45.00 | Child (4–11): \$35.00

Includes Lunch Buffet (12PM–2PM)

Beng Teng Spa

MASSAGE PACKAGES

- 60 Min / Pregnancy Massage — \$60.50
- 90 Min Package — \$90.75
- 2 Hour Package — \$121
- 3 Hour Package — \$181.50

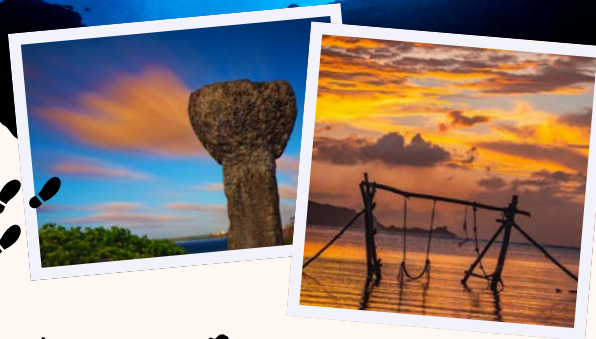
Dragon Hill Lodge



Reserve 7 Days Prior | Exclusive to all eligible DOD patrons!

\$90/night (2 persons)

- Breakfast — \$25/person



Hours of Operation

Monday: 9AM–5PM

Tuesday: CLOSED

Wednesday–Friday: 9AM–5PM

Saturday: 9AM–1PM

Sunday: CLOSED

Closed Federal Holidays

Contact Us

☎ (671) 989-2301

✉ mwrguamitt@gmail.com

🌐 nbg.militarymwr.com

📍 Naval Base Guam — Bldg. 75 Chapel Rd



Naval Base Guam Tickets & Travel



Your Island Adventure Starts Here!



Bikini Island Club



Ages 2+: Free admission (participation may be restricted)
Infants (1 and under): Not permitted

Marine Package w/ Lunch (6 HOURS)

- Adult (14+) — \$99
- Ages 7–13 — \$80
- Ages 3–6 — \$57

Marine Package + Parasailing (4.5 HOURS)

- Adult (14+) — \$165
- Ages 8–13 — \$140

Marine Package + Aquaman Walker (4.5 HOURS)

- Adult (14+) — \$170
- Ages 8–13 — \$140

Aquaman Walker + Banana Boat + Snorkeling

- Adult (14+) — \$70
- Ages 8–13 — \$55

DOLPHIN WATCHING + JET SKI

Start Times: 9:30AM | 1:30PM | 2:50PM

- 1 HR Dolphin + Jet Ski (Single 18+) — \$105
- 2 HR Dolphin + Jet Ski (Single 18+) — \$175
- 1 HR Dolphin + Jet Ski (Tandem) Driver (18+) + Rider (4–17) — \$175
- 2 HR Dolphin + Jet Ski (Tandem) Driver (18+) + Rider (4–17) — \$225

PRIVATE BOAT CHARTERS

Start Times: 9:50AM | 11:50AM | 2:50PM

- 2 HR Charter (Max 6) — \$295
- 3 HR Charter (Max 6) — \$395
- 3 HR Charter (Max 27) — \$630
- Additional Hour — \$145
- Optional Bikini Island Tour (10 mins) — \$15

Joe's Jet Ski



Open Daily | Reserve 1 Day Prior

Tour Times: 9AM | 10AM | 11AM | 12PM

Parasailing: 9AM | 9:40AM | 10:20AM | 11AM | 11:40AM

- **Two Lover's Point**
 - Single (Age 14+) — \$120.00 | Tandem — \$190.00
- **Ague Cove**
 - Single — \$170.00 | Tandem — \$250.00
- **Parasailing**
 - Adult Single (Age 14+) — \$55.00 | Child (6–11) — \$45.00
 - Boat Rider — \$45.00

Guam Ocean Adventures

Open Daily: 8:30AM–1PM (2 Person Minimum Booking Per Tour)

SNORKELING & SUP

- SUP Lesson + Guided Snorkeling (Ages 6+) — \$82.50 Adult

DIVING

- **SUP Lesson + Beach Dive (1 Dive)** — \$132.50
- **Experience Diving (Ages 12+)**
 - 1 Dive — \$86.50 | 2 Dives — \$132.50
- **Beach Diving (Ages 12+)**
 - 1 Dive — \$86.50 | 2 Dives — \$132.50



Adult (12+) | Child (6–11) | Child (0–5): FREE

OBSERVATORY

- **Underwater Observatory + Coconut Experience**
 - \$32.13 Adult | \$19.85 Child
 - W/Lunch— \$47.25 Adult | \$29.30 Child
- **Island Costume + Coconut Experience**
 - \$41.58 Adult | \$25.52 Child
 - W/Lunch— \$56.70 Adult | \$34.97 Child
- **Island Costume + Coconut + Dolphin Watching + Lunch**
 - \$88.83 Adult | \$54.81 Child

SNORKELING

- **Snorkeling** — \$41.58 Adult | \$25.52 Child
- **Snorkeling + Lunch** — \$56.70 Adult | \$34.97 Child
- **Snorkeling + Dolphin Watching + Lunch** — \$88.83 Adult | \$54.81 Child

DOLPHIN WATCHING

- **Dolphin Watching Cruise (Group Tour – 30+ Adults)**
 - \$41.58 Adult | \$25.52 Child
- **Dolphin Watching + Underwater Observatory**
 - \$51.03 Adult | \$31.19 Child
 - W/Lunch— \$66.15 Adult | \$40.64 Child

DINING & SHOWS

- **Lunch Only** — \$18.90 Adult | \$11.34 Child
- **Island Cultural Dinner Show**
 - \$90.72 Adult | \$55.76 Child
- **Dinner Show + Underwater Observatory**
 - \$102.06 Adult | \$61.43 Child
- **Premium Dinner Show Seat**
 - \$103.95 Adult | \$64.26 Child
- **Dinner Show + Observatory + Premium Seat**
 - \$115.29 Adult | \$69.93 Child

Big Sunset Cruise

OPEN: Monday & Thursday

Adult (12+) | Child (2–11)

- **Cruise Only** — \$58.50 Adult | \$29.25 Child
- **Regular (w/Dinner)** — \$112.50 Adult | \$47.75 Child
- **VIP (w/Dinner)** — \$164.25 Adult | \$65.00 Child
 - VIP Cruise requires minimum of 2 adults

Taotao Tasi

CLOSED: Wednesday & Sunday

SHOW ONLY

- Adult (12+) — \$73.50 | Child (6–11) — \$21.75
- VIP Adult — \$108.00 | Child — \$30.25

DINNER SHOW

- Adult (12+) — \$112.50 | Child (6–11) — \$39.00
- Group (20+) — \$96.77 per person
- VIP Adult — \$147.00 | Child — \$60.50
- Super VIP Adult — \$250.75 | Child — \$60.50

Karera

CLOSED: Wednesday & Sunday

- **Child (2–5): FREE (seat provided)**
- **Infant (under 2): FREE (no seat provided)**

SHOW ONLY

- Regular — \$86.50 Adult | \$21.75 Child (6–11)
- VIP — \$121.00 Adult | \$21.75 Child
- Super VIP — \$216.00 Adult | \$21.75 Child
- Presidential Box — \$432.00 Adult | \$43.25 Child

DINNER SHOW

- Regular Dinner — \$116.75 Adult | \$21.75 Child
- VIP Dinner — \$151.25 Adult | \$21.75 Child
- Super VIP Dinner — \$246.25 Adult | \$21.75 Child
- Presidential Box Dinner — \$462.25 Adult | \$21.75 Child

PREMIER DINNER SHOW (SEAFOOD)

- Regular Seafood — \$116.75 Adult | \$21.75 Child
- VIP Seafood — \$151.25 Adult | \$21.75 Child
- Super VIP Seafood — \$246.25 Adult | \$21.75 Child
- Presidential Box Seafood — \$462.25 Adult | \$21.75 Child

Magic of Anthony Reed

Open: Monday & Friday

- \$50 Adult | \$17 Child
 - One FREE child per paying adult + One FREE popcorn per booking